



BT8100

Printing blanket for conventional inks

APPLICATION

Presses	Sheet-fed
Substrates	Metal
Inks	Conventional
Wash-up solvents	Conventional
Indentation plate/blanket presses <1080mm	0.10mm-0.15mm (after running in)
Indentation plate/blanket presses >1080mm	0.15mm-0.20mm (after running in)
Torque in N/m	Blanket across 20mm (-0/+10%)

CUSTOMER VALUE

Productivity:

- Allows high press speed due to outstanding release properties of tin plates and aluminium sheets, inclusive of light weight ones.
- Extended cleaning intervals, limited tendency for ink piling in non image areas.

Quality:

- Balanced halftone and solid quality.

Sustainability:

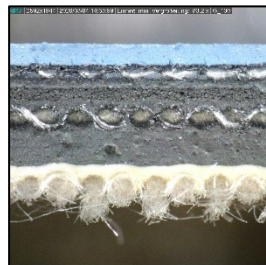
- Drop in wash and cleaning web usage as a result of extended cleaning intervals.
- Cutback in start-up waste generated by extra blanket cleaning for ink piling during the print run.
- Occasionally reported to allow ink savings.
- Enhanced operator health protection.
- Reinforced consumer protection.

Boost your Production



FEATURES

- Rough surface finish.
- High micro-hardness surface rubber with high chemical resistance.
- Low compressibility.
- Compliant with REACH regulations.
- Isega-certified.



TECHNICAL DATA

Construction:

Fabric plies	3
Compressible layer	Microspheres, closed cells

Surface:

Surface material	NBR rubber
Colour	Blue
Finish	Ground & polished
Roughness(Ra)	1.2-1.5µm
Micro-hardness	70 Shore A

Physical Properties:

Overall hardness	79 Shore A
Tensile strength	>3500N/50mm
Elongation at 500N/50mm	<1.5%
Gauge loss at tensioning and running in	<2%
Indentation at 100N/cm ²	0.12mm (6.1%)
Indentation at 200N/cm ²	0.18mm (9.2%)

Gauge:

Nominal gauge	1.96mm (+/-0.02mm)
Gauge uniformity per plate of max. 1SQM	+/-0.015mm

Metal Decorating

