



## BT8200

### Printing blanket for conventional inks and mixed-mode applications

#### APPLICATION

<b>Presses</b>	Sheet-fed
<b>Substrates</b>	Paper and carton
<b>Inks</b>	Conventional and UV
<b>Wash-up solvents</b>	Conventional and UV
<b>Indentation plate/blanket presses &lt;1080mm</b>	0.10mm-0.15mm (after running in)
<b>Indentation plate/blanket presses &gt;1080mm</b>	0.15mm-0.20mm (after running in)
<b>Torque in N/m</b>	Blanket across 20mm (-0/+10%)

#### CUSTOMER VALUE

##### Productivity:

- Reduction in press downtime for cleaning, prompt and easy to clean.
- Less press downtime for blanket change due to format changes and retain images in mixed-mode applications.

##### Quality:

- The blanket of choice whenever halftone quality is of crucial importance.
- Sharp and well defined dots.
- Crisp halftones.
- Full dots, dense solids.
- Cool running, facilitates ink/water-balance stability.

##### Sustainability:

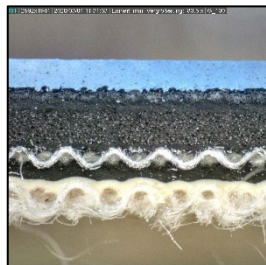
- Contraction in printing blanket consumption due to mechanical or chemical damage.
- Drop in wash and cleaning web usage as a result of easy cleaning surface.
- Enhanced operator health protection.
- Reinforced consumer protection.

# Boost your Production



## FEATURES

- Very smooth surface finish.
- High micro-hardness surface rubber with high chemical resistance.
- High compressibility.
- Compliant with REACH regulations.
- Isega-certified.



## TECHNICAL DATA

### Construction:

Fabric plies	3
Compressible layer	Microspheres, closed cells

### Surface:

Surface material	Mixed-mode rubber
Colour	Blue
Finish	Ground & polished
Roughness(Ra)	0.5-0.8µm
Micro-hardness	70 Shore A

### Physical Properties:

Overall hardness	79 Shore A
Tensile strength	>3500N/50mm
Elongation at 500N/50mm	<1.5%
Gauge loss at tensioning and running in	2%
Indentation at 100N/cm <sup>2</sup>	0.15mm (7.6%)
Indentation at 200N/cm <sup>2</sup>	0.25mm (12.7%)

### Gauge:

Nominal gauge	1.96mm (+/-0.02mm)
Gauge uniformity per plate of max. 1SQM	+/-0.015mm

Commercial Print

