

VitaWash Ultra

Cleaning Agent for Rollers and Blankets

Cleaning agent for cleaning printing blankets and rollers in sheet-fed presses. Applicable especially in food packaging printing. Particularly suitable for use in automatic roller and blanket washing units in sheet-fed printing.

Application

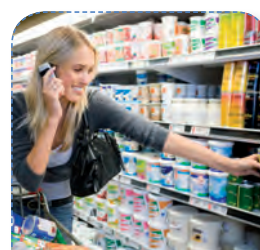
- | | |
|--|---|
| <ul style="list-style-type: none"> 🌐 flash point > 62 °C 🌐 based on aliphatic hydrocarbons 🌐 free of aromatics and corrosion inhibited 🌐 excellent for removing dirt at the non-printing area 🌐 enhanced cleaning effect 🌐 reduced cleaning agent consumption | <ul style="list-style-type: none"> 🌐 spontaneous emulsification and high emulsion stability 🌐 excellent for removing paper dust and paper dust edges 🌐 enhanced draining characteristics in drain pans on blanket washing units 🌐 to be removed with water, leaving no residues |
|--|---|

Features

We recommend setting the washing system to optimise the cleaning cycle and VitaWash Ultra performance. In case of manual cleaning, use VitaWash Ultra undiluted or mixed with water. Apply the wash to the blanket or roller, then finally rinse with water until all ink and cleaning agent residues have been removed.

VitaWash Ultra meets the test criteria of the machine manufacturers. It is certificated by ISEGA, intended use provided, VitaWash Ultra is therefore appropriate for the application in the food packaging printing.

Note





- 20 litre can
- 200 litre barrel
- 1000 litre container

Package

VitaWash Ultra is classified according to EC-Directive 1999/45/EC - in its latest version and does not need to be marked.

VitaWash Ultra is not a dangerous good in the sense of national and international transport regulations.

Marking

All our product information sheets, as well as our contact data you will find on the internet www.boettcher-systems.com.

Felix Böttcher GmbH & Co. KG

Headquarter

Stolberger Str. 351 - 353
 50933 Cologne, Germany
 Phone +49 (0) 221 4907 - 1
 Fax +49 (0) 221 4907 - 435
koeln@boettcher-systems.com



www.boettcher.de/contact

