

BöttcherTop 7700

Sheetfed blanket

| | |
|--------------------|--|
| → Presses | Sheetfed |
| → Packing height | Conform to OEM recommendations |
| → Substrates | Paper and carton |
| → Inks | Conventional and vegetable oil-based, UV |
| → Wash-up solvents | Conventional, low VOC, VOC-free, UV |

Application

| | |
|---|---|
| → Micro-ground printing surface, controlled roughness 0.9 - 1.2 µm | <ul style="list-style-type: none"> 🌐 Sharp and Crisp halftones 🌐 Full dots, dense and well-spread solids 🌐 Optimum ink cover on all paper grades (coated, uncoated) 🌐 Excellent sheet release (Quick Release) 🌐 Prompt and easy to clean |
| → Surface compound with enhanced resistance | <ul style="list-style-type: none"> 🌐 High chemical resistance to swelling and / or shrinking 🌐 Controlled swelling in mixed-mode and hybrid applications 🌐 No retain images with soja-based inks |
| → First compressible layer (soft) | <ul style="list-style-type: none"> 🌐 In permanent action 🌐 Handles uneven substrates and thickness variations in substrates with ease 🌐 Compensates for minor packing imperfections 🌐 Compensates for mechanical shortcomings such as cylinder bounce (streaks), press specific vibrations and press wear |
| → Second compressible layer (hard) | <ul style="list-style-type: none"> 🌐 Progressively enters into play only as first compressible layer gets squeezed 🌐 Excellent resistance to excess-pressure (double sheets, folded sheets, format changes etc.) 🌐 Extended service life |
| → High stability carcass manufactured from pre-stretched and multi-calendered fabrics | <ul style="list-style-type: none"> 🌐 Minimum residual elongation and controlled gauge loss 🌐 High dimensional and register stability, also on big format sheet-fed presses |

Features / Benefits



Construction

Fabric plies: 3
 Compressible layer: closed cells
 Identification lines: none

Surface

Colour: Blue
 Finish: ground and polished
 Roughness (Ra): 0.9 – 1.2 µm
 Micro-hardness: 63° Shore A

Physical properties

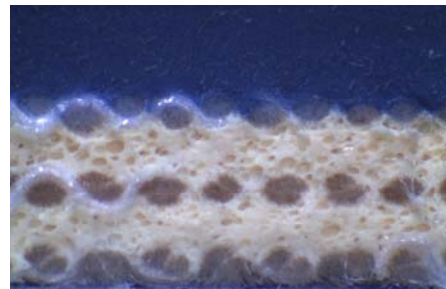
Overall hardness: 78° Shore A
 Tensile strength: > 4000N/50 mm
 Elongation at 500N/50 mm: < 2%
 Gauge loss at tensioning and running in: < 2%

Physical properties

Indentation at 100N/cm²: 0.15 mm (7.7 %)
 Indentation at 200N/cm²: 0.25 mm (12.8 %)

Gauge

Nominal gauge: 1.96 mm(+/-0.02 mm)
 Gauge uniformity per Blanket of max. 1 m²: +/- 0.015 mm



All our product information sheets, as well as our contact data you will find on the internet www.boettcher-systems.com.

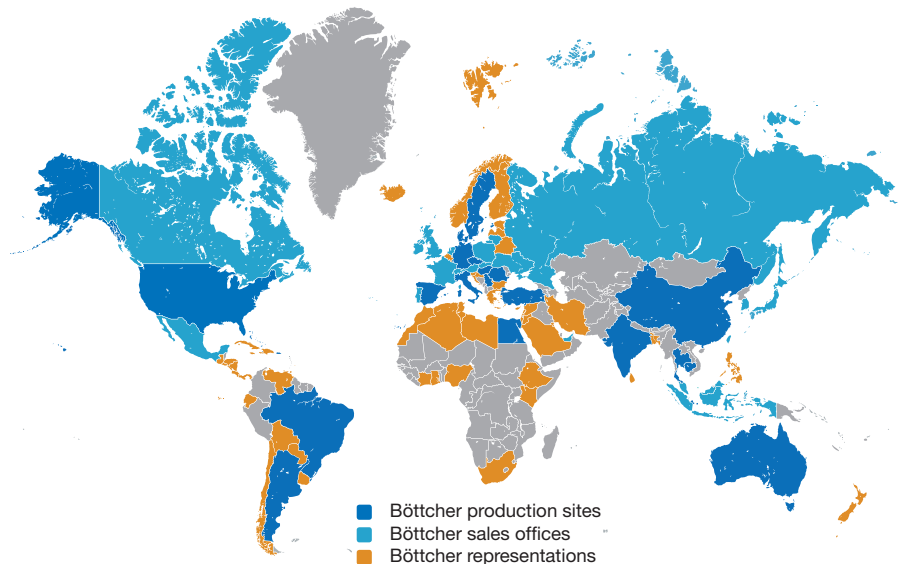
Felix Böttcher GmbH & Co. KG

Headquarter

Stolberger Str. 351 - 353
 50933 Cologne, Germany
 Phone +49 (0) 221 4907 - 1
 Fax +49 (0) 221 4907 - 435
 koeln@boettcher-systems.com



www.boettcher.de/contact



The purpose of these technical data is to assist our customers. We list general experience and laboratory test. Translation of these to actual applications is, however, subject to a variety of factors which are beyond our control. We ask for understanding that claims can not be based upon them.